

### Specifications

Product code	Inner diameter	Length	Shape	Valve	Hydrophilic coating length
GS*F5ST1C45	5 Fr / 0.076" / 1.9 mm	45 cm	Straight	CCV *	5 cm
GS*F5HS1C45	5 Fr / 0.076" / 1.9 mm	45 cm	Hockey Stick	CCV	5 cm
GS*F5MP1C45	5 Fr / 0.076" / 1.9 mm	45 cm	Multipurpose	CCV	5 cm
GS*F5RDCC45	5 Fr / 0.076" / 1.9 mm	45 cm	RDC	CCV	5 cm
GS*F5LIMC45	5 Fr / 0.076" / 1.9 mm	45 cm	LIMA	CCV	5 cm
RSR01	6 Fr / 0.087" / 2.2 mm	45 cm	Straight	CCV	5 cm
RSR02	6 Fr / 0.087" / 2.2 mm	45 cm	Hockey Stick	CCV	5 cm
RSR03	6 Fr / 0.087" / 2.2 mm	45 cm	Multipurpose	CCV	5 cm
RSR13	6 Fr / 0.087" / 2.2 mm	45 cm	RDC	CCV	5 cm
RSR14	6 Fr / 0.087" / 2.2 mm	45 cm	LIMA	CCV	5 cm
RSR04	7 Fr / 0.100" / 2.5 mm	45 cm	Straight	CCV	5 cm
RSR05	7 Fr / 0.100" / 2.5 mm	45 cm	Hockey Stick	CCV	5 cm
RSR06	7 Fr / 0.100" / 2.5 mm	45 cm	Multipurpose	CCV	5 cm
RSR15	7 Fr / 0.100" / 2.5 mm	45 cm	RDC	CCV	5 cm
RSR16	7 Fr / 0.100" / 2.5 mm	45 cm	LIMA	CCV	5 cm
RSP01	6 Fr / 0.087" / 2.2 mm	65 cm	Straight	CCV	35 cm
RSP02	7 Fr / 0.100" / 2.5 mm	65 cm	Straight	CCV	35 cm
GS*K5ST1T90B	5 Fr / 0.076" / 1.9 mm	90 cm	Straight	TBV**	15 cm
GS*K5MP1T90B	5 Fr / 0.076" / 1.9 mm	90 cm	Multipurpose	TBV	15 cm
GS*K5ST1C90B	5 Fr / 0.076" / 1.9 mm	90 cm	Straight	CCV	15 cm
GS*K5MP1C90B	5 Fr / 0.076" / 1.9 mm	90 cm	Multipurpose	CCV	15 cm
RSC01	6 Fr / 0.087" / 2.2 mm	90 cm	Straight	TBV	15 cm
RSC03	6 Fr / 0.087" / 2.2 mm	90 cm	Multipurpose	TBV	15 cm
RSC05	6 Fr / 0.087" / 2.2 mm	90 cm	Straight	CCV	15 cm
RSC07	6 Fr / 0.087" / 2.2 mm	90 cm	Multipurpose	CCV	15 cm
RSC02	7 Fr / 0.100" / 2.5 mm	90 cm	Straight	TBV	15 cm
RSC04	7 Fr / 0.100" / 2.5 mm	90 cm	Multipurpose	TBV	15 cm
RSC06	7 Fr / 0.100" / 2.5 mm	90 cm	Straight	CCV	15 cm
RSC08	7 Fr / 0.100" / 2.5 mm	90 cm	Multipurpose	CCV	15 cm

All dilators are 0.038" (0,96 mm) wire compatible

\* Cross Cut Valve (Terumo's standard sheath valve)  
\*\* Tushy-Borst Valve (Y-shape rotating valve)



**Terumo Corporation**  
44-1, 2-chome, Hatagaya  
Shibuya-ku, Tokyo 151-0072,  
Japan  
Tel.: +81 3 3374 8111  
Fax: +81 3 3374 8196

**European Headquarters**

**Terumo Europe N.V.**  
Interleuvenlaan 40  
3001 Leuven, Belgium  
Tel.: +32 16 38 12 11  
Fax: +32 16 40 02 49

**Terumo Europe  
Interventional Systems  
Liaison Office**  
Immeuble Krebs  
8, rue Jean-Pierre Timbaud  
CS 10720  
78067 Saint Quentin  
en Yvelines Cedex,  
France  
Tel.: +33 139 30 95 75  
Fax: +33 139 30 95 70

**European Offices**

**Terumo Europe N.V.  
Benelux Sales Division**  
Interleuvenlaan 40  
3001 Leuven,  
Belgium  
Tel.: +32 16 39 25 80  
Fax: +32 16 39 25 99  
The Netherlands:  
Tel.: 0800 0220396  
Fax: 0800 0220414

**Laboratoires Terumo France S.A.**  
Parc Ariane - Bât. Uranus  
1, rue Héliène Boucher  
78284 Guyancourt Cedex,  
France  
Tel.: +33 130 96 13 00  
Fax: +33 130 43 60 85

**Terumo Italia Srl**  
Via Simone Martini, 143/145  
00142 Roma RM,  
Italy  
Tel.: +39 0651 96 14 20  
Fax: +39 0650 30 407

**Terumo UK Ltd**  
Tamesis, The Causeway  
Egham, Surrey  
TW20 9AW, United Kingdom  
Tel.: +44 1784 476 200  
Fax: +44 1784 476 201

**Terumo Deutschland GmbH**  
Ludwig-Erhard-Strasse 6  
65760 Eschborn, Germany  
Tel.: +49 6196 80 230  
Fax: +49 6196 80 23 200

**Terumo Deutschland GmbH**  
Zweigniederlassung Spreitenbach  
Bodenackerstrasse 3  
8957 Spreitenbach, Switzerland  
Tel.: +41 56 419 10 10  
Fax: +41 56 419 10 11

**Terumo Europe España SL**  
Avda. Juan Carlos I, Nº 13 - 7ª Planta  
Edificio Torre La Garena  
28806 Alcalá de Henares (Madrid),  
Spain  
Tel.: +34 9021 01 298  
Fax: +34 9021 01 358

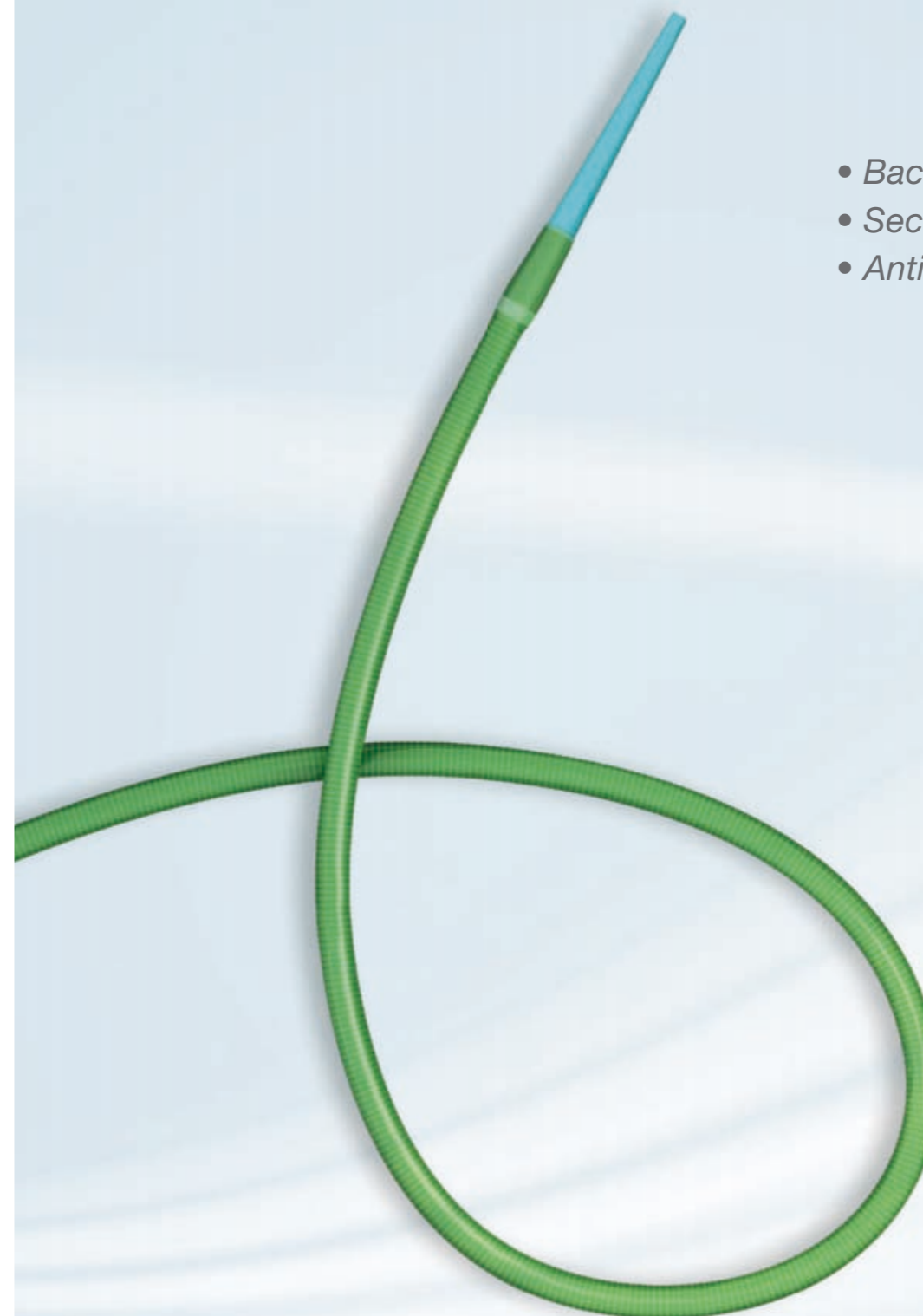
**Terumo Sweden AB**  
Nya Varvet, Byggnad 90  
Sven Källfelts Gata 18  
426 71 Västra Frölunda, Sweden  
Tel.: +46 3174 85 880  
Fax: +46 3174 85 890

**Terumo Denmark  
Filial of Terumo Sweden AB**  
Tel.: +45 7020 93 80  
Fax: +45 7020 94 80

**Terumo Europe N.V.  
Moscow Representative Office**  
JSC Northern Tower  
13Fr., 10 Testovskaya Street  
Moscow 123317, Russia  
Tel.: +7 495 988 4740  
Fax: +7 495 988 4739

**Addresses subject to change,  
please consult our Website.**

© Registered Trademark  
Published by Terumo Europe N.V.



- Back-up support
- Secured haemostasis
- Anti-kinking shaft



IS17GB0904MDX211210JE

# Large lumen trackability and kink resistance

**Optimal flexibility** while maintaining a high level of kink resistance and back-up support

**Coil reinforced** tubing with PTFE inner liner minimizes friction, promotes smooth passage of devices

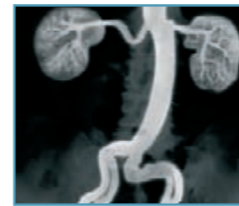
Specially designed **atraumatic tip** minimizes vessel damage without sacrificing smooth transitions and easy penetration



Crossover

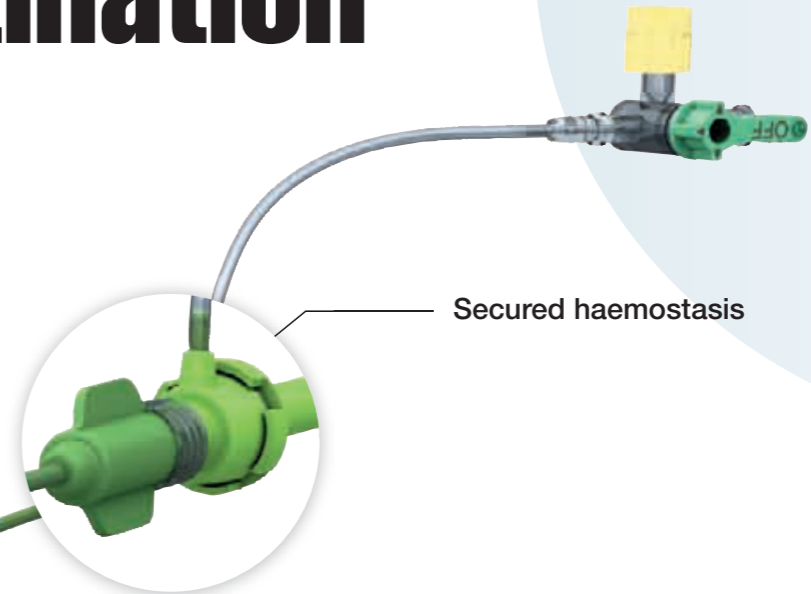


Carotid



Renal

# Destination®



Secured haemostasis

Your choice of high performance detachable valves



Excellent tapering on dilator

Nylon shaft reinforced with stainless steel coil

Hydrophilic coating at distal

Soft tip with radiopaque marker

## Cross Cut™ haemostasis valve



Patented\* by Terumo, this detachable version of the traditional Terumo valve offers unique features that help you complete your procedures quickly and safely.

- Innovative Cross-Cut™ design permits smooth device delivery with uncompromised haemostasis
- Dilator locks securely in place to prevent back-out during insertion

\*U.U. Pat. N° 4,610,665

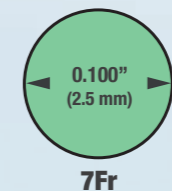
## Tuohy-Borst valve



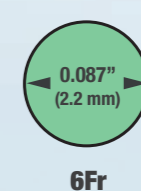
Unique custom designed valve offers a variety of benefits

- Shorter barrel allows more guide wire working length, less dead space decreases chances of thrombus accumulation
- Valve's clear barrel promotes instant detection of air bubbles and thrombus
- Optional dilator retaining clip included for added security in difficult cases to prevent dilator back-out while sheath is advanced

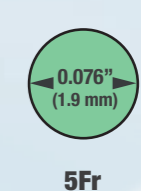
## Inner diameter



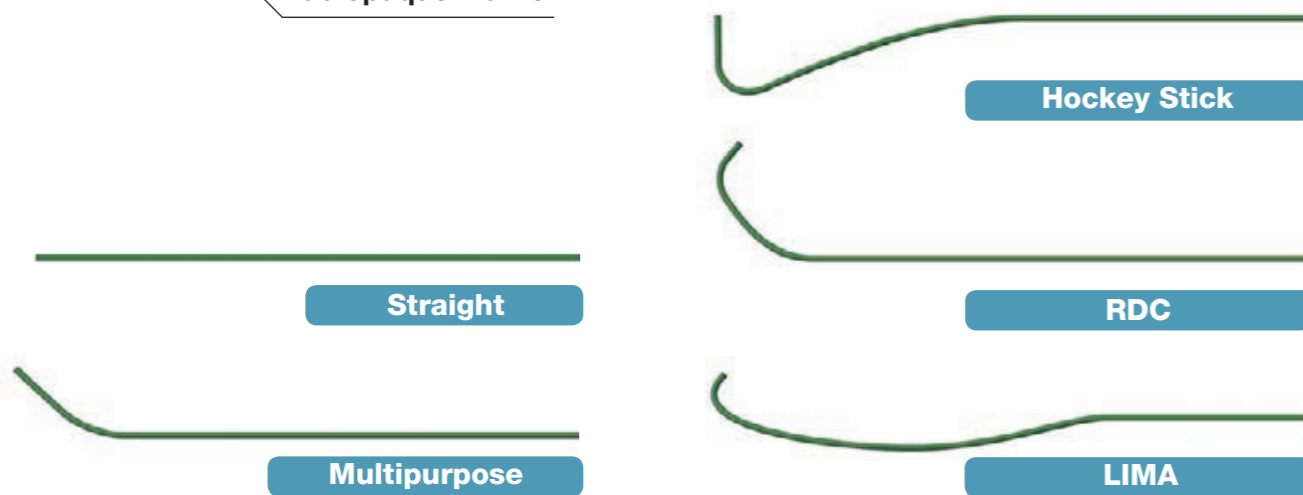
7Fr



6Fr



5Fr



Straight

Multipurpose

Hockey Stick

RDC

LIMA